

# ELEGANT HOMIES™

BACK BY  
POPULAR  
DEMAND!  
SECOND PRINTING

24  
BEAUTIFUL  
HOMES  
LAYERED IN  
LUXURY

Spring/Summer 2008  
Display until April 29



MeredithSpecials

INCLUDED  
with your purchase is a  
1-YEAR  
subscription to  
TRADITIONAL  
HOME



Value of \$6.00, see inside  
for subscription info  
and rebate details.



# Desert Hideaway

Surrounding The Bolders, a community in Scottsdale, Arizona, are the trappings of the desert: saguaro cactus, quail, roadrunners, coyotes and a towering mountain of stones.

A curved adobe-style home—a refuge in this land of extremes—rises from the landscape as if it were as natural as the sand around it. Architect Larry Andren achieved his goal: He created a home that looks as though it had grown there.

An undulating roofline echoes the curves of the land while front columns reflect the vertical lines of surrounding cacti. The deep-gray exterior blends with neighboring homes as well as the shrubs, mesquite, and paloverde trees nestled among boulders in the landscaping.

Andren explains that rather than fighting the elements that were already there, he and builder Steve Bates worked with them. The rugged terrain and natural detritus became a visual—a part of the architecture—tying the ground plane to the vertical.





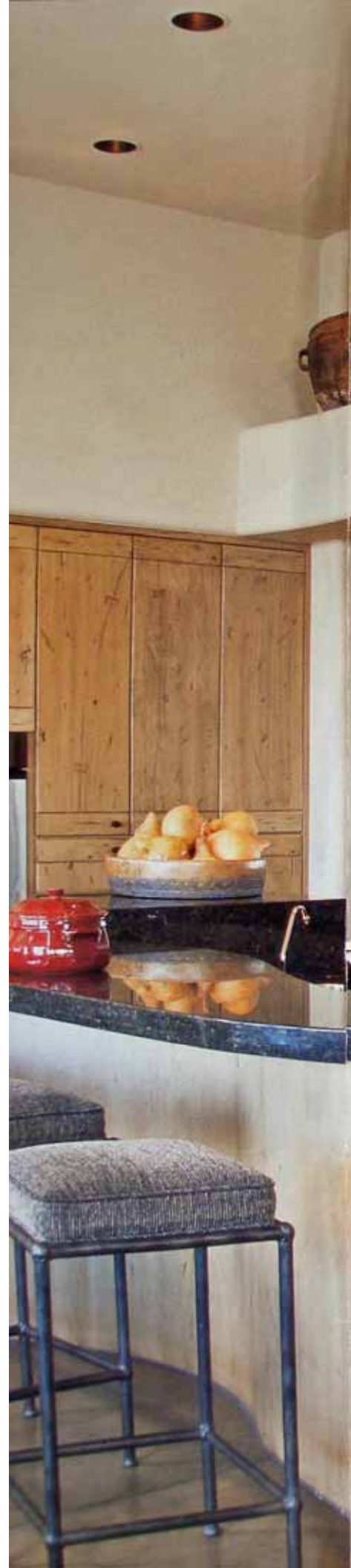
This philosophy suffuses the entire 5,000-square-foot space. Inside, interior designer Billi Springer combined rounded shapes with serenely cool. Polished surfaces to impart sophistication.

**BELOW:** Reclaimed Wood was used to Build this storage unit. It's warm golden tones Complement polished Concrete flooring.

Springer Explains that everywhere there is something slick, something organic resides next to it for balance. Colored and polished concrete floors create a low-maintenance surface that looks like burnished leather. Rounded stucco walls counteract shiny granite-top furniture with wrought-iron legs. In the kitchen, unusual wood cabinetry and a tucked-in fireplace balance a stainless-steel refrigerator and handmade stove hood.

**RIGHT:** The kitchen-a study in contrasts-Has dark granite countertops and pale cabinets, rounded corners and straight lines. The large, multilevel island is multifunctional as well.

The three-tier kitchen island is a favorite feature of the homeowners. The multiple levels afford different areas for food preparation and eating, while a dishwasher is elevated for more comfortable loading.







The powder room draws inspiration from African art. Walls in the diminutive space are unusual; geometric designs were inscribed in inch-thick plaster before it dried, and then the surface was aged and polished. Windows made of poured glass provide subtle light above the carved-stone vanity.

Thick arching walls add luxury to the surroundings throughout. From a practical standpoint, it's hard to curve all the walls, but Andren says that by choosing the right ones, the whole house give the impression of roundness.

The counterpoint of curves and straight lines gives the dwelling a proportion and scale perfectly in keeping with the starkly beautiful desert environment. "In the kitchen, you can see the sun come up in the morning and go down in the evening," Andren says. "The house is perfectly placed." EH



**RIGHT:** Though the powder room is small, the unexpected heft of a stone vanity, the decorative plaster walls, and the poured-glass windows make a substantial impact.

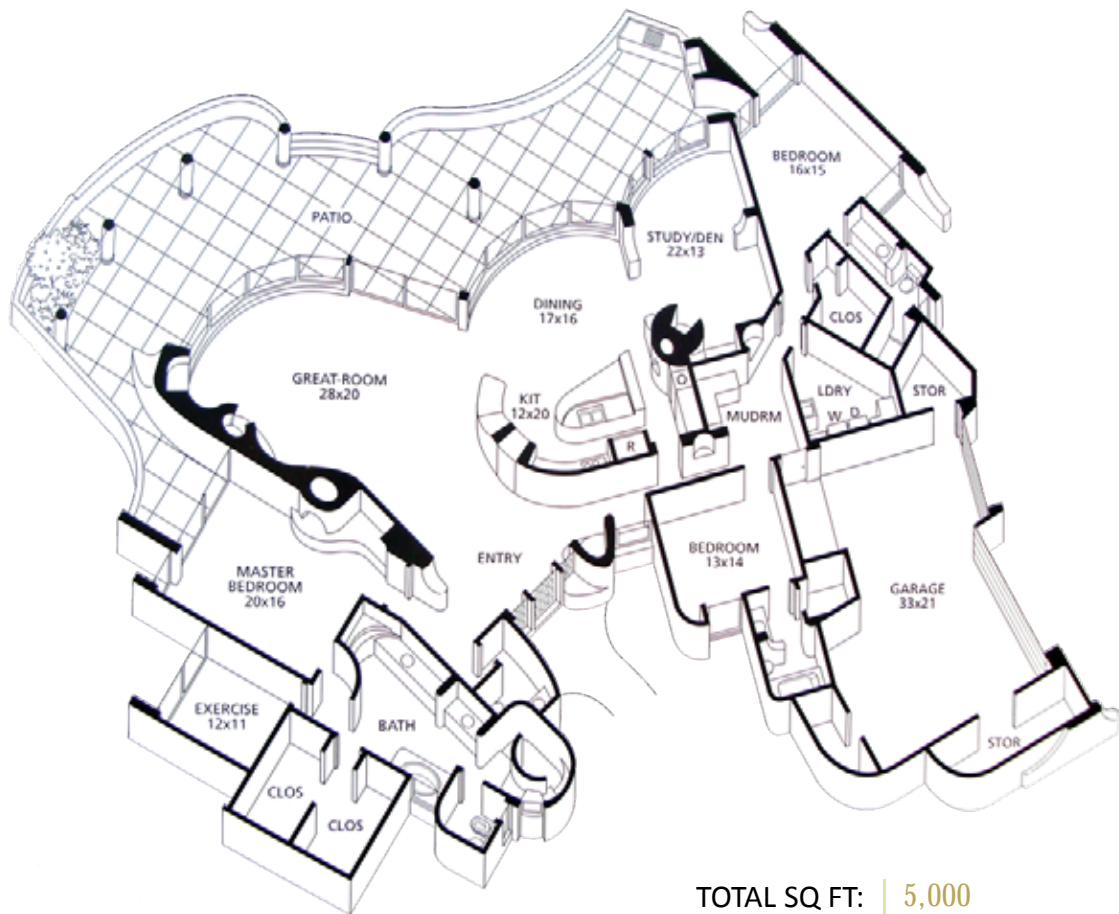
**TOP:** A thick slab of stone crowns the hammered-copper basin, mounted from below the counter.

**ABOVE:** An inch-thick layer of plaster was carved while wet in a design drawn from the framed Ethiopian wedding apron.





**A COVERED AREA** outside makes a home seem much larger and increases its livability as well. The most successful such areas combine elements or colors from inside the home with those from the surrounding landscape for a seamless transition between the two. Here, a roof supported by tree-trunk posts shelters iron furniture with comfortable cushions. Walls similar to stucco walls inside share duty with natural boulders in containing the area around the adjoining stone-rimmed water feature.



TOTAL SQ FT: 5,000  
 BEDROOMS: 3  
 BATHROOMS: 3 full, 1 half